

A PARENT TUTORIAL

Understanding 2018 PSAT/NMSQT Results

A Case Study: Ima B. Student's PSAT/NMSQT Score Report

Take a look at Ima B. Student's sample score report below and on the back. Use the information to help you interpret your student's PSAT/NMSQT® Score Report.

What are Ima's scores?

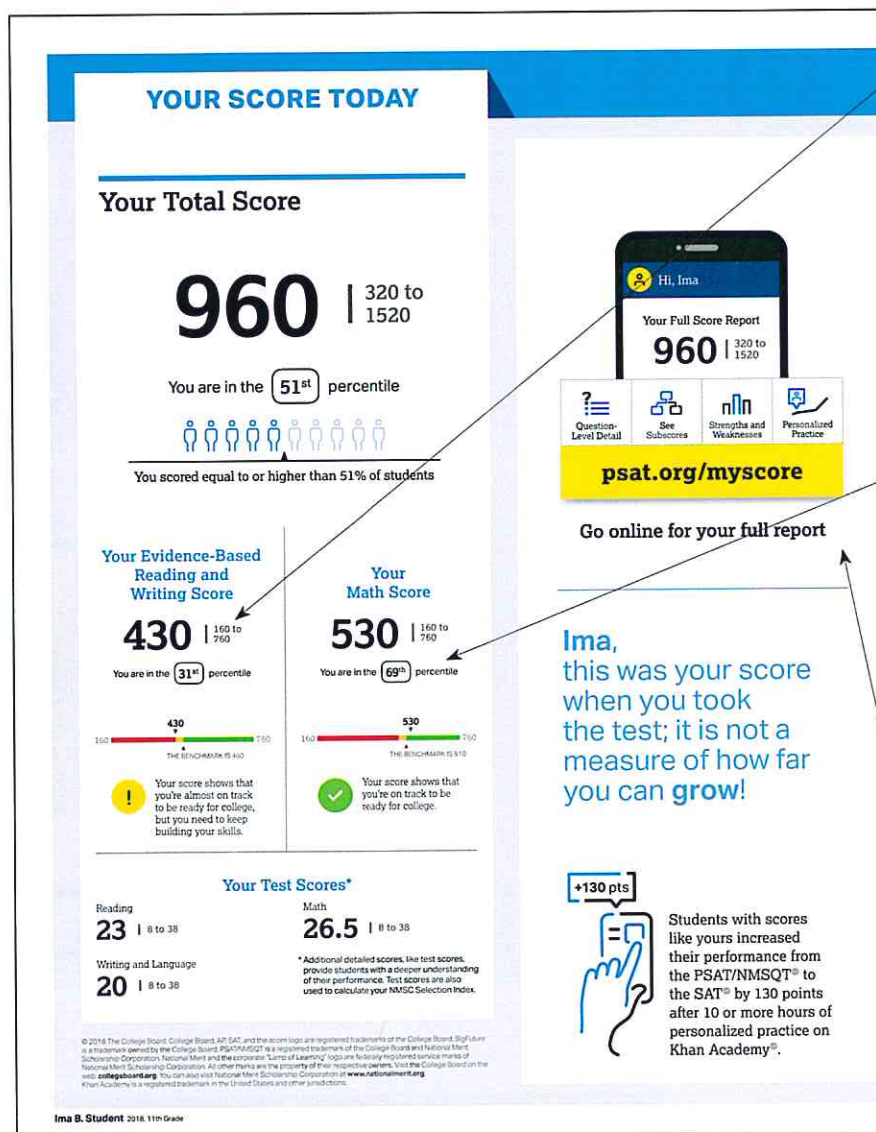
Ima's Evidence-Based Reading and Writing score is 430, and her Math score is 530. In Evidence-Based Reading and Writing, Ima's score is approaching the benchmark, but she is not quite on track for college readiness. In Math, however, Ima is exceeding the benchmark and is on track. Test scores, cross-test scores, and subscores can give Ima a better understanding of areas to work on.

What are Ima's score percentiles?

Since Ima is in the 11th grade, the percentiles compare her scores with those of all 11th graders in the nation. Ima scored as well as or better in Evidence-Based Reading and Writing than 31% of a nationally representative group of juniors. In Math, she scored as well as or better than 69% of a nationally representative group of juniors. Additional percentiles are available in Ima's online score report.

How can Ima see her full report?

Ima is directed to psat.org/myscore to see her full score report, learn how to prepare for the SAT®, and see her potential for AP® coursework.



YOUR PATH TOMORROW

Here's what else is waiting for you online:

- 1** A link to free personalized practice on Khan Academy. Share your scores with Khan Academy to get your personalized practice.
- 2** A list of the challenging courses you're ready for. Congrats! Your scores show you're ready to succeed in AP® courses.
- 3** Your customized starter college list. Check out the tools at BigFuture™ to kick-start your college plans.

SAT Don't forget! Register to take the SAT ahead of college application deadlines in spring of junior year and fall of senior year.

NATIONAL MERIT SCHOLARSHIP CORPORATION

Your NMSC Selection Index
139

NMSC uses a Selection Index score based on PSAT/NMSQT scores as an initial screen of students who enter its scholarship programs. The Selection Index score is double the sum of your Reading, Writing and Language, and Math Test scores.

Eligibility Information
You meet entry requirements for the 2020 National Merit Scholarship Program and your Selection Index score will be considered among 1.6 million program entrants.

Entry Requirements
Information you provided on your answer sheet:
High school student: **YES**
Year to complete high school and enroll full time in college: **2020**
Total years to be spent in grades 9-12: **4**

National Merit Scholarship Corporation
National Merit Scholarship Corporation (NMSC) conducts the National Merit® Scholarship Program, an academic competition for recognition and college scholarships.
To designate students who qualify for recognition in its 2020 competition, NMSC will consider the 2018 PSAT/NMSQT® Selection Index scores of some 1.6 million test takers (usually high school juniors) who meet program entry requirements. For more information, please visit: www.nationalmerit.org
If any of your responses to NMSC's "Entry Requirements" questions are inaccurate or there has been a change in plans that may affect program entry, write immediately to:
National Merit Scholarship Corporation
Attn: Scholarship Administration
1560 Sherman Avenue, Suite 200
Evanston, IL 60201-4897
Include your name and home address along with your high school name, address, and six-digit code number.

Ima B. Student 2018 118 000

Score Report

What are Ima's next steps?

When Ima accesses her full score report at psat.org/myscore, she'll also be able to connect to free, personalized practice on Khan Academy®, see her potential for AP coursework, and use the college- and career-planning resources at BigFuture™.

Will Ima be able to enter the National Merit Scholarship Program?

Ima has an NMSC Selection Index score of 139, which is double the sum of her Reading Test (23), Writing and Language Test (20), and Math Test (26.5) scores. This Selection Index score is used by National Merit Scholarship Corporation to designate students to be recognized in its National Merit® Scholarship Program.

If an asterisk had appeared next to Ima's score, it would mean she did not meet entry requirements for the program or her score was provided for guidance purposes only and would not be considered in the National Merit Scholarship Program. In this case, Ima meets entry requirements and will be recognized if her score places her among the 50,000 high scorers. For entry requirements and information on the steps in the competition, see the 2018 PSAT/NMSQT Student Guide or visit www.nationalmerit.org.

When should Ima take the SAT?

As a junior, Ima should begin planning when she will take the SAT. Most students take the SAT for the first time in their junior year. By planning now, Ima can ensure she has adequate time to practice for the SAT. She can take advantage of practice resources by visiting psat.org/myscore.

How can Ima learn from her answers?

Using her score report with her PSAT/NMSQT test booklet, Ima can see the actual questions, correct answers, and difficulty level alongside her own answers. She can use her online score report to review the questions she answered incorrectly or omitted, and to see detailed answer explanations.

NOTE: For students at schools participating in the test administration study or research group or testing on Saturday, October 13, the actual questions, answers, and answer explanations won't be provided, and the score report won't include the correct answer column.

Your Question-Level Feedback

QUESTIONS OVERVIEW	READING				WRITING AND LANGUAGE				MATH - CALCULATOR				MATH - CALCULATOR			
	Questions	Correct	Your Answer	Difficulty	Questions	Correct	Your Answer	Difficulty	Questions	Correct	Your Answer	Difficulty	Questions	Correct	Your Answer	Difficulty
47 Total Questions 21 Correct Answers	1 A	✓	✓	1	1 D	✓	✓	1	1 B	✓	✓	1	15 C	✓	✓	1
25 Incorrect Answers 1 Omitted Answers	2 B	✗	✗	2	2 B	✓	✓	2	2 A	✓	✓	2	16 B	✓	✓	2
44 Total Questions 17 Correct Answers	3 C	✓	✓	3	3 C	✓	✓	3	3 B	✓	✓	3	17 D	✓	✓	3
26 Incorrect Answers 1 Omitted Answers	4 B	✗	✗	4	4 C	✓	✓	4	4 D	✓	✓	4	18 B	✓	✓	4
31 Total Questions 15 Correct Answers	5 C	✓	✓	5	5 B	✓	✓	5	5 B	✓	✓	5	19 C	✓	✓	5
14 Incorrect Answers 2 Omitted Answers	6 D	✗	✗	6	6 B	✗	✗	6	6 A	✓	✓	6	20 B	✓	✓	6
17 Total Questions 10 Correct Answers	7 B	✓	✓	7	7 A	✓	✓	7	7 B	✓	✓	7	21 B	✓	✓	7
7 Incorrect Answers 0 Omitted Answers	8 A	✗	✗	8	8 B	✓	✓	8	8 C	✓	✓	8	22 D	✓	✓	8
33 Total Questions 10 Correct Answers	9 D	✓	✓	9	9 A	✓	✓	9	9 A	✓	✓	9	23 D	✓	✓	9
14 Incorrect Answers 0 Omitted Answers	10 A	✗	✗	10	10 D	✓	✓	10	10 D	✓	✓	10	24 C	✓	✓	10
31 Total Questions 15 Correct Answers	11 D	✓	✓	11	11 D	✓	✓	11	11 D	✓	✓	11	25 B	✓	✓	11
7 Incorrect Answers 0 Omitted Answers	12 D	✗	✗	12	12 B	✓	✓	12	12 A	✓	✓	12	26 D	✓	✓	12
33 Total Questions 10 Correct Answers	13 D	✓	✓	13	13 C	✓	✓	13	13 B	✓	✓	13	27 D	✓	✓	13
14 Incorrect Answers 0 Omitted Answers	14 A	✗	✗	14	14 C	✓	✓	14	14 C	✓	✓	14				
31 Total Questions 15 Correct Answers	15 C	✓	✓	15	15 D	✓	✓	15	15 C	✓	✓	15	28	65		
7 Incorrect Answers 0 Omitted Answers	16 B	✓	✓	16	16 B	✓	✓	16	16 B	✓	✓	16	29	52		
31 Total Questions 15 Correct Answers	17 D	✓	✓	17	17 D	✓	✓	17	17 B	✓	✓	17	30	1568		
14 Incorrect Answers 2 Omitted Answers	18 B	✗	✗	18	18 B	✓	✓	18	18 A	✓	✓	18	31	85		
17 Total Questions 10 Correct Answers	19 A	✓	✓	19	19 B	✓	✓	19	19 B	✓	✓	19				
7 Incorrect Answers 0 Omitted Answers	20 C	✗	✗	20	20 C	✓	✓	20	20 C	✓	✓	20				
31 Total Questions 15 Correct Answers	21 B	✓	✓	21	21 A	✓	✓	21	21 A	✓	✓	21				
14 Incorrect Answers 2 Omitted Answers	22 D	✗	✗	22	22 A	✓	✓	22	22 A	✓	✓	22				
17 Total Questions 10 Correct Answers	23 B	✓	✓	23	23 C	✓	✓	23	23 C	✓	✓	23				
7 Incorrect Answers 0 Omitted Answers	24 D	✗	✗	24	24 C	✓	✓	24	24 C	✓	✓	24				
31 Total Questions 15 Correct Answers	25 C	✓	✓	25	25 C	✓	✓	25	25 C	✓	✓	25				
14 Incorrect Answers 0 Omitted Answers	26 B	✗	✗	26	26 A	✓	✓	26	26 A	✓	✓	26				
17 Total Questions 10 Correct Answers	27 B	✓	✓	27	27 A	✓	✓	27	27 A	✓	✓	27				
7 Incorrect Answers 0 Omitted Answers	28 A	✗	✗	28	28 C	✓	✓	28	28 B	✓	✓	28				
31 Total Questions 15 Correct Answers	29 D	✓	✓	29	29 D	✓	✓	29	29 D	✓	✓	29				
14 Incorrect Answers 0 Omitted Answers	30 B	✗	✗	30	30 C	✓	✓	30	30 C	✓	✓	30				
17 Total Questions 10 Correct Answers	31 D	✓	✓	31	31 D	✓	✓	31	31 D	✓	✓	31				
7 Incorrect Answers 0 Omitted Answers	32 A	✓	✓	32	32 B	✓	✓	32	32 B	✓	✓	32				
31 Total Questions 15 Correct Answers	33 C	✓	✓	33	33 D	✓	✓	33	33 D	✓	✓	33				
14 Incorrect Answers 0 Omitted Answers	34 A	✗	✗	34	34 D	✓	✓	34	34 D	✓	✓	34				
17 Total Questions 10 Correct Answers	35 A	✓	✓	35	35 D	✓	✓	35	35 D	✓	✓	35				
7 Incorrect Answers 0 Omitted Answers	36 C	✗	✗	36	36 B	✓	✓	36	36 B	✓	✓	36				
31 Total Questions 15 Correct Answers	37 B	✓	✓	37	37 C	✓	✓	37	37 C	✓	✓	37				
14 Incorrect Answers 0 Omitted Answers	38 C	✗	✗	38	38 A	✓	✓	38	38 A	✓	✓	38				
17 Total Questions 10 Correct Answers	39 C	✓	✓	39	39 C	✓	✓	39	39 C	✓	✓	39				
7 Incorrect Answers 0 Omitted Answers	40 C	✗	✗	40	40 D	✓	✓	40	40 D	✓	✓	40				
31 Total Questions 15 Correct Answers	41 B	✓	✓	41	41 D	✓	✓	41	41 D	✓	✓	41				
14 Incorrect Answers 0 Omitted Answers	42 A	✗	✗	42	42 A	✓	✓	42	42 A	✓	✓	42				
17 Total Questions 10 Correct Answers	43 A	✓	✓	43	43 C	✓	✓	43	43 C	✓	✓	43				
7 Incorrect Answers 0 Omitted Answers	44 A	✗	✗	44	44 C	✓	✓	44	44 C	✓	✓	44				
31 Total Questions 15 Correct Answers	45 A	✓	✓	45	45 A	✓	✓	45	45 A	✓	✓	45				
14 Incorrect Answers 0 Omitted Answers	46 D	✗	✗	46	46 D	✓	✓	46	46 D	✓	✓	46				
17 Total Questions 10 Correct Answers	47 C	✓	✓	47	47 C	✓	✓	47	47 C	✓	✓	47				
7 Incorrect Answers 0 Omitted Answers																

***Tip:** A great way to start improving: check out the easy questions you missed first.

KEY
 ✓ Correct
 ✗ Incorrect
 U Uncertain
 X Multi-Grid/Incorrect

● Easy Question
 ■ Medium Question
 ■ Hard Question
 ■ Easy Question Missed

psat.org/myscore
Go online for your full report

Strength and Weaknesses | Personalized Practice

Ima B. Student 2018 118 000

Score Report